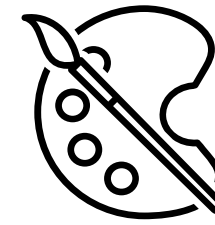




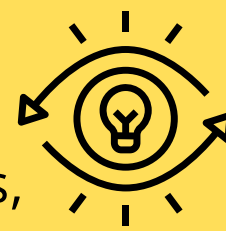
SUBJECT ON A PAGE ART & DESIGN



Inspiring Today's Children To Embrace Tomorrow's Challenges

VISION ✨

At Gilthill, our Art and Design curriculum inspires pupils to communicate creatively, be ready to explore ideas, show respect for others' work, and stay safe while expressing themselves. Through creativity and curiosity, children are inspired to face challenges with confidence and imagination.



INTENT ✨

- Children develop curiosity, creativity, and independence by exploring ideas, techniques, and materials. They learn the commitment of artists and designers, show enthusiasm for developing their own original work, and grow in confidence to take risks and face challenges.
- Children gain a deeper appreciation of different artistic styles and cultures, showing empathy, care, and reflection towards their own work and that of others. They continue to refine their technique and personal style, taking inspiration from great artists and designers.
- Children work with confidence and responsibility, using tools and materials safely and thoughtfully. They collaborate effectively, showing co-operation and adaptability while maintaining awareness of the environment and world around them.



IMPLEMENTATION ✨

- Art at Gilthill nurtures creativity, imagination, and inventiveness through engaging skills-based teaching taught from EYFS to Year 6 using a cross-curricular approach.
- Skills and knowledge are developed year on year, with techniques revisited and refined over time.
- Teaching builds understanding of colour, line, tone, texture, pattern, shape, form, and space to enable pupils to express ideas visually through tactile media such as drawing, painting, collage, sculpture, printing and textiles in a calm, stimulating environment that promotes confidence and self-expression.
- Children are encouraged to experiment, take creative risks, and find enjoyment in artistic exploration using sketchbooks and artist inspiration.
- Children learn to describe, evaluate, and respond to art from diverse historical, cultural, and religious contexts. Learning about great artists, craftspeople, and designers using appropriate artistic language.
- Each unit links to termly projects, ensuring a cohesive and progressive learning experience across year groups and Key Stages.
- Learning is enriched through exposure to a wide range of artists, cultures, and creative experiences.



IMPACT ✨

- Assessment in Art and Design is ongoing and embedded within teaching and learning.
- Teachers use observation, discussion, and questioning to monitor the progress and understanding of our learning threads.
- Each pupil (Year 1–6) has a Sketchbook which provides evidence of pupils' developing skills, creativity, and knowledge over time.
- Pupils reflect on their work, identifying strengths and areas for improvement through self and peer assessment.
- Assessment focuses on technical skills, application of knowledge, creativity, and personal growth.



By the time pupils leave Gilthill, they are confident, creative individuals who can communicate effectively through art, demonstrate a thirst for learning, and show aspiration for the future. They embrace challenges with imagination and resilience, using their artistic skills to express ideas and respond to the world around them.

www.gilthillprimaryschool.co.uk/

Follow the QR code to visit the Art and Design page on our school website for more information.

