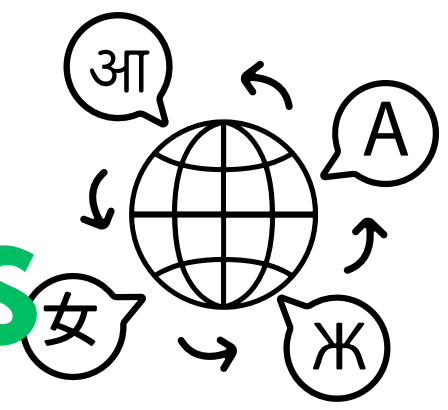




SUBJECT ON A PAGE

MODERN FOREIGN LANGUAGES



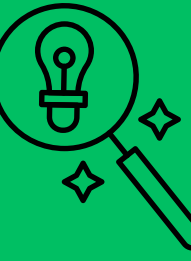
Inspiring Today's Children To Embrace Tomorrow's Challenges

VISION



At Gilthill, our French curriculum inspires pupils to communicate confidently in another language, explore new cultures and develop a curiosity about the wider world. Children are encouraged to express themselves, take risks and build resilience through language learning. Through creativity and curiosity, pupils gain the skills and confidence to embrace new challenges, show respect for others and develop as global citizens.

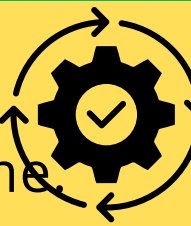
INTENT



- Children develop curiosity, confidence and independence by learning a new language through the 'Language Angels' scheme of work. They build communication skills in listening, speaking, reading and writing.
- Children gain a deeper understanding of different cultures and traditions, developing empathy, respect and global awareness.
- Pupils progressively acquire and apply vocabulary, grammar and pronunciation skills to communicate effectively for real purposes.
- Children build confidence and resilience, taking risks in language learning and developing a positive attitude towards making mistakes.
- Learning is inclusive, engaging and structured to ensure all pupils can succeed and make progress.



IMPLEMENTATION



- French is taught weekly across the school, using the structured and progressive 'Language Angels' scheme.
- Lessons are carefully sequenced to build knowledge and skills over time, revisiting and reinforcing prior learning.
- Pupils develop skills across the four key areas:

Listening
Speaking
Reading
Writing

- Teachers use interactive resources, songs, games and role-play to support engagement and retention.
- Key vocabulary and phonics are explicitly taught to support accurate pronunciation.
- Grammar is introduced in a progressive and age-appropriate way (e.g. gender, sentence structure).
- Cultural learning is embedded, exploring life in French-speaking countries.
- Learning builds towards purposeful outcomes such as conversations, presentations and simple written pieces.

IMPACT



- Assessment is ongoing through observation, questioning and practical language use.
- Pupils demonstrate increasing confidence in speaking and understanding French.
- Children can recall and apply vocabulary and structures in new contexts.
- Pupils show curiosity and respect for other cultures and languages.
- Each pupil develops a foundation for future language learning at Key Stage 3.
- Pupils reflect on their progress and take pride in their developing communication skills.

By the time pupils leave Gilthill...

They are confident, curious learners who can communicate at a basic level in French, understand and respect other cultures and are prepared to continue their language learning journey with enthusiasm and resilience.



www.gilthillprimaryschool.co.uk/

Follow the QR code to visit the MFL page on our school website for more information.

