



East Midlands
Education Trust



INFORMATION FOR PARENTS

GILTHILL PRIMARY SCHOOL

Part of EMET (East Midlands Education Trust)

**‘Inspiring today’s children to
embrace tomorrow’s challenges’**



TABLE OF CONTENTS

3 - 5	Headteacher Welcome
6 - 7	Vision, aims & values
8	Celebration and rewards
9 - 10	School hours & organisation
11 - 12	Our curriculum
13 - 19	Subject overviews
20	Enrichment
21 - 22	Starting school
23	Residential Visits
24	School Clubs
25	Communicating with parents
26	Absence and medicines
27	SEND & Safeguarding
28 - 29	School uniform
30 - 32	Lunchtime arrangements
34	Parent voice/testimonials

Welcome from the Headteacher

'Inspiring today's children to embrace tomorrow's challenges'

Welcome to Gilthill Primary School! This booklet is designed to give you an insight into life at Gilthill. We know choosing the right school for your child can be a difficult decision, but we want you to know that your child will be in safe hands with us. Starting school is an exciting time for children and we aim to make this experience a happy and successful one. By working in partnership, we can ensure all of our children thrive and develop in a calm and nurturing school environment.

A Gilthill education is about developing the whole child and providing opportunities for them to flourish within and beyond the classroom. It is the aim of the whole school team to help each child become resilient and independent individuals who are well prepared for the changing society in which we live. We teach children in an atmosphere of warmth and support, celebrating their achievements so that they can grow in confidence, feel valued, develop high self-esteem, have positive attitudes to learn and achieve high standards. We believe that learning should be a rewarding and enjoyable experience for everyone.

We aim to build good relationships between home, school and the wider community by being open and approachable, communicating and collaborating with governors, parents and others for the benefit of the children's learning. We welcome parents into school regularly and seek your views and opinions on many aspects of school life. We hope to repay the trust invested in us by ensuring that all children achieve well in all aspects of school life – intellectually, physically, creatively and socially.

We want our children to look back on their time at Gilthill with fondness and pride.



We are very proud of our school building and the resources this offer, both inside and out. We have a modern, purpose-built school which offers a wealth of creative and stimulating learning spaces. The school itself was built in 2006 to replace the old school building which is now used for private housing at the front of the school site. We are lucky to be surrounded by an abundance of green space in which our children can grow and explore, taking full advantage of our outdoor learning offer.

We have designed our curriculum around one main driver of good communication. The children at Gilthill need to be able to develop their skills in being good communicators in a variety of ways, from simple verbal development of language, to being able to adapt to new situations and expand their world to enable them to see all the possibilities which could be in front of them.

In 2022, Ofsted visited Gilthill and judged all areas of school to be good with some areas, including EYFS, achieving some of the outstanding criteria. We were particularly proud that Ofsted recognised that,



'Gilthill Primary School 'feels like family'. This is the view of the majority of pupils, parents and carers and staff who responded to surveys or who spoke to the inspectors. Pupils are kind, caring and inclusive of each other. Staff model the kindness and respect they expect the pupils to show.' Ofsted September 2022.



This is integral to the ethos of our school and the foundation of our curriculum offer. Our school values of 'Ready, Respectful and Safe' are lived and breathed throughout the school and are celebrated regularly, ensuring our children have the opportunity to develop both academically, socially and culturally. We offer a wide range of extracurricular activities with 85% of our children accessing at least one after-school activity last year. We are aiming for this to be 100%! A recent parent survey highlighted personal development as a real strength at Gilthill with one parent commenting that,

'Staff care and pupils feel valued and want to work to the best of their abilities. Always a full range of extra-curricular activities for pupils to engage with.'

I am delighted that you have chosen Gilthill as the right school for your child. I hope you enjoy finding out some key information about our school in this booklet, however, if you require any further information, please do not hesitate to get in touch. The team are always happy to help!

Yours sincerely
Nicky Allison
Headteacher



Our Vision

'We aim to inspire today's children to embrace tomorrow's challenges.'

Our Aims

We build on what children have to offer, to give them a broad and balanced curriculum in a stimulating, enjoyable and caring environment so that they are able to develop their resilience and independence to be well-prepared for the changing society in which we live.

Our children are proud to wear their Gilthill badge! They care about their school, their friends and their teachers. We believe children should leave primary school with fond memories, lasting friendships and a drive and ambition to succeed in their next challenge.

We give children equal access to the opportunities the school offers regardless of their gender, race, religion, background or abilities. We have high expectations that children will develop respect for each other and all members of the school community, where standards of behaviour are high and where children learn to behave appropriately in a variety of situations.

We aim to provide our children with a rich education underpinned by excellent relationships and care – we see this as the key to effective teaching and learning. Children need to feel safe and happy at school so that they can enjoy all the challenges that school life brings.

We believe that effective partnerships with parents are integral to achieving our aims. Parents are actively encouraged to be involved in school life, from helping out on trips and activities, seeking your views and opinions and supporting the school through our PTA events.





Our Values

At Gilthill, we teach our children to be,

Ready, Respectful, and Safe.

These values underpin every aspect of school life from our behaviour and conduct in school to our curriculum learning. We celebrate our values in our weekly ACE assembly, where a value champion from each class is rewarded for demonstrating our focus value (both at school and at home).

ACE Assembly (Achievement, Celebration, Enjoyment)

Our weekly ACE assemblies are the highlight of the working week at Gilthill. As well as children being recognised for their value achievements, children also receive certificates for their academic achievements and for being good communicators (our curriculum driver). The children love receiving their certificates and the accolade of sharing their work and achievements with the whole school. Our midday supervisors also give an award to the class who have demonstrated good lunchtime behaviour over the week. This could be for their excellent table manners, their kindness to others or their safe play at lunchtime.

We also award one child with the courtesy cup. At Gilthill we believe that kindness and courtesy should be recognised and encourage all our children to be courteous to all adults and children in school.

We also recognise good attendance in school. The attendance cup is proudly displayed in the classroom of the class with the highest weekly attendance.

Writing is very important to us here at Gilthill. We celebrate the children's writing achievements by awarding them with a writing certificate each time they progress to the next stage in their writing journey. The writing certificates linked to each year group are as follows:

Writing Certificates

Reception- SPARKS

- Year 1- FIRE
- Year 2- EARTH
- Year 3- NATURE
- Year 4- WATER
- Year 5- AIR
- Year 6- SPACE

The children are so proud to receive their next writing certificate in our ACE assembly. What an achievement!

School Hours and Organisation

School Opening

Reception and Year 1 children

Children will be coming in through the top gate. Gates will open at 8.40am and will close at 8.50am. Year 1 children will enter first, followed by Reception children.

Year 2 – 6

Both bottom gates will be opened at 8.40am until 8.50am. Children and their parents will be welcome on the playground at this time. Children can make their own way up the slope to their classrooms from 8.40am. This staggered time is designed to reduce any congestion going up the slope and prevent parents from congregating on the main road outside the school grounds. Could we please ask parents not to come to school earlier than the set opening times. This is to ensure everyone's safety. A member of staff will be on the playground from 8.40am when the gates open.

If children arrive after 8.50am, they will need to enter school through the school office.

School end times

Reception and Year 1 children

Children will be leaving school via the top gate. The gate will open at 3.20pm where the reception children will be leaving first, followed by the Year 1 children. Children will only be handed over to their parents or a designated adult. If another adult is collecting, please contact the school to inform us.

Year 2

Both bottom gates will be opened at 3.20pm. Parents are welcome onto the site from 3.20pm. The Year 2 children will be brought down to the playground for parents to collect from 3.20pm. Teachers will only release children when their parents, or a designated adult, have been seen. Please contact the school if another adult is collecting.

School Hours and Organisation

Years 3-6

Children in years 3-6 will be brought down to the playground at 3.30pm for collection.

Teachers will only release children when they have seen their parents or carers. Could we please ask parents to collect and leave the playground promptly to prevent any congestion and ensure teachers can identify parents clearly.

Safety

Keeping our children safe is a key priority for us at Gilthill. We will only release children if we have seen their parent or carer. If another adult is collecting, please let school know. Could we ask that once collected, children are supervised at all times and leave the school site promptly. This includes when waiting on the playground for older siblings. Could we ask that children do not play in the carpark or near the main entrance doors.

If children are brought to school by car, we ask you to avoid parking close to school because of the danger to children walking to school. Parents are not permitted to park in the school carpark or to drive into school to collect children. Your co-operation ensures the safety of the children and also the good relationship between the school and our neighbours in the adjacent roads.

School organisation

We are a one form entry primary school, meaning we have one class per year group. Infant class sizes are not permitted to exceed 30 pupils. We aim to maintain this number throughout school. We currently have approximately 210 pupils in school. We offer a waiting list for when places in school become available. More information can be found on our website under admissions.



Our Curriculum

Our curriculum is designed to support our whole school vision, where we aspire to:

‘Inspire today’s children to embrace tomorrow’s challenges.’

To achieve this, we have designed our curriculum around three main aims:

1. To develop excellent communication skills which allow our children to adapt to new situations, share their ideas and emotions and become active, motivated learners who can see all the possibilities which could be in front of them.
2. To embed our Gilthill learning values to create a positive learning environment that enhances academic achievement and develops students’ social and relationship skills that last throughout their lives and prepares them for future challenges.
3. To provide a coherent and structured curriculum that has breadth of knowledge which is pertinent to our pupils and leads to sustained acquisition of relevant knowledge, skills and understanding of the world around them and the changing society in which we live.

The school follows the National Curriculum. We teach through termly learning themes, mapped on a two-yearly cycle. This ensures key concepts and knowledge enter pupils’ long-term memory through building on prior learning and making links across the curriculum. We believe that retrieval of previously learned content should be frequent and regular, which increases both storage and retrieval strength. Oracy is used to strengthen and develop our learners’ ability to acquire and retain new knowledge and deepen understanding.

Parents are informed of termly learning themes through our parent overviews which are shared on our website. This ensures parents are aware of the learning taking place and can support their child/children with this at home.

By the time our children leave our school we aim to have developed their ability to communicate their learning and emotions effectively, have a thirst for learning and an understanding of what makes us good learners. This will give our children aspirations for the future and the tools to embrace any challenges with confidence and resilience.

‘Teachers use ‘learning threads’ to help pupils connect their knowledge. This ensures pupils know how any new learning relates to what they have learned before. Teachers use their good subject knowledge to engage pupils in clear and meaningful learning activities. Pupils work hard to complete the tasks teachers give them. As a result, pupils are remembering more and growing in confidence as learners.’ Ofsted 2022.

At Gilthill we follow the National Curriculum in both KS1 and KS2. Pupils will study the following subjects:

- English
- Maths
- Science
- Computing
- Art and Design Technology
- Geography
- History
- Music
- Physical education
- Religious education
- PHSE
- MFL (French)



To ensure coverage and depth of learning we have developed a bespoke whole school curriculum that ensures continuity and progression throughout school. We aim to foster links between subjects and use the richness of our local areas to deepen our learning and give meaning to new ideas.

We have an active school council who help to shape our curriculum offer and bring new ideas based on pupil voice.

Subject overviews

Mathematics

At Gilthill we follow a mastery approach to teaching maths. We use a variety of teaching and learning styles to provide strong foundations, conceptual understanding and the ability to apply these skills to a variety of problem solving and real-life situations. We aim to foster a culture of independence and resilience where children learn from their mistakes and think systematically about the mathematic tasks they face.

Practical learning, using concrete resources is essential to building fluency and understanding in early maths. We use the White Rose maths resources to structure our curriculum in maths and ensure all children develop at their pace. We assess the children regularly and adapt our teaching to suit the needs of the children.

English

Oracy is an integral part of our curriculum and is present in all subject areas. Our bespoke oracy framework was developed through the Voice 21 project which enables our children to learn through talk and to talk. This allows children to develop and deepen their subject knowledge and understanding through talk in the classroom.



Phonics and spelling

Phonics is taught daily in EYFS and KS1. We use Little Wandle Letters and Sounds revised phonics scheme, which is a validated systematic and synthetic phonics programme, to teach early reading and spelling.



Subject overviews

Reading

We know that reading and developing a love of reading is essential for enabling success across the curriculum and building skills for life. We want our children to become lifelong readers who immerse themselves in high quality texts. All our children have daily reading sessions which include guided reading, individual reading and whole class reading. This is supplemented by regular reading at home, recorded in their home/school diary. 1:1 reading is also used to support children in early reading acquisition. Ebooks are used to support reading and consolidation at home.



We are also in the process of developing our school library. We encourage children to have their age-appropriate reading text as well as a book of their choice. Teachers model positive reading habits by introducing children to quality texts and engaging the children in discussions and conversations, developing their reading choices as well as building comprehension skills. We also model and encourage reading for pleasure and the joy of enjoying a good book!

We offer regular 'reading cafes' where we can enjoy reading together and parent workshops to support parents when reading at home with their child.

Handwriting

Throughout the school children have regular handwriting practice. In KS2, handwriting is integral to English lessons with children being taught to join their handwriting from the start of KS2.

Subject overviews

Writing

Writing is a key life skill and is therefore a main focus for teaching at Gilthill. Children are given the opportunity to practice and refine their written skills through structured planning, writing and editing activities using a variety of high-quality fiction, nonfiction and poetry texts. Children learn how to present their thoughts, ideas and understanding as well as developing their spelling, grammar and punctuation skills through a carefully designed, progressive writing curriculum.



Science

Our science curriculum is based on a mastery approach where children are able to develop their scientific knowledge and understanding through scientific enquiries. We want our children to develop their higher order thinking skills such as hypothesising, predicting and summarising through our progressive learning threads in science. Children take part in practical investigations learning to confidently communicate their scientific ideas and understanding to others.

Subject overviews

Computing

All classes in school have access to discrete computing sessions in the ICT suite and through class sets of iPads and laptops. They are taught the skills of computing so that they are able to utilise these in other areas of the curriculum. Every class has an interactive whiteboard to facilitate learning. Keeping safe online is integral to our computing curriculum and is taught discretely as well as through internet safety theme days and activities and reinforced through assemblies.

Music

Music is very important to us as Gilthill as we know many children show their creativity through music. In school, we offer music lessons with a peripatetic music teacher in drums, piano and music tech. We very much enjoy showcasing our talents during musical assemblies and performances for parents.

Religious Education

Our RE teaching follows the Nottinghamshire agreed RE syllabus. Our aim is to teach an understanding of key faiths to ensure respect, tolerance and self-respect for others. We want to provide our children with provoking and challenging questions about human life, beliefs, communities and ideas and to prepare them for the multi-cultural society in which we live.

Parents have the right to withdraw their child from religious education. Please contact the school if you wish to discuss this further.

Modern Foreign languages

We are very lucky at Gilthill to have a specialist languages teacher who comes to school once a week to teach all classes French. Madame Barnes has developed a progressive languages framework to ensure our children develop their fluency in French over the years. The language development and fluency of our children is often commented on when the children move to Secondary school.

Subject overviews

History and Geography

In humanities, we highlight the key concepts through our learning threads. These are the big ideas that run through all of our teaching in History and Geography. We take a topic-based approach immersing children in learning both in their immediate locality and the wider world. We use knowledge categories to link learning across themes and encourage retrieval of previous learning to ensure our children know more and remember more.



Personal, Social and Health Education

Children's emotional health is vitally important for preparing them for the challenges they face in life. This is taught through our PSHE and RSE (relationship and sex education) frameworks. We follow the SCARF curriculum which promotes positive behaviour, mental health, wellbeing, resilience and achievement.

Parents have the right to withdraw their child from sex education lessons. We keep parents informed of when these lessons are taking place and our PSHE subject lead is always happy to discuss the lesson content with parents. Please get in touch if you require further information.

Subject overviews

Art and Design Technology

Our art and design curriculum is embedded in our learning themes ensuing a cross-curricular approach. In art, children learn about the works of the greats as well as the skills they need to develop their understanding and practical application of art. They work with different materials and develop techniques such as sculpture, textiles and printing. We are currently working towards the Artsmark award for schools.

In design and Technology, children have the opportunity to work with different materials and tools to produce creative and innovative design ideas, learning how to plan, construct and evaluate their designs.



Subject overviews

Physical Education

At Gilthill, being active is part of every school day. We promote children's physical and emotional well-being by encouraging healthy and positive lifestyle choices. All children have at least two hours of PE per week. At least one of these hours is taught by a specialist PE coach.

We offer a range of sporting activities from gymnastics and athletics to team games and swimming. Swimming is taught in block sessions from year 3 upwards at the Kimberley Leisure Centre.

We also offer wheelchair basketball and our twice weekly 'well-being event' for our KS2 children where they get to run or walk around the school grounds, building stamina and improving fitness levels. We also offer Drumba as part of our curriculum offer. This is a mixture of aerobic exercise and drumming which the children love. The teachers quite enjoy it too and have become very skilled in teaching it.

We have an active football team for both boys and girls and we enjoy competing in matches with other local schools. We also have a very successful cross-country team which has achieved great success in local competitions.

Our sports coach runs two after-school sporting clubs each week. These are offered to all year groups in school, including EYFS, over the year and offers the opportunity to enjoy sports such as dance, football and multi-skills.



Enrichment

Wider School Offer

In addition to our curriculum offer, we also have a variety of enrichment activities to support our cultural capital plan. These include but not limited to:

- First aid training for all year groups
- Road safety workshops
- Life skills workshops
- DART programme for Year 6 children
- Pantomime and theatre trips
- Theatre productions in school
- Cycling proficiency



Starting School

Starting School In Early Years

We are a one-form entry primary school, meaning we will have one Reception class in September. Children join us from a range of preschool settings to start their journey with us at Gilthill. The Early Years Curriculum is designed to provide a broad and balanced curriculum in the following areas of learning:
Prime areas of learning:

- Communication and language
- Physical development
- Personal, social and emotional development

Specific areas of learning:

- Literacy
- Mathematics
- Understanding the world
- Expressive arts and design



Starting School

Starting School In Early Years

The curriculum is planned in termly learning themes. These will be communicated to you via parent overviews every term. There is also regular communication via Dojo from Mrs Cregan and her team on what is happening in class.

There is a combination of adult-led and child initiated play based learning within a safe, well resourced learning environment. During our recent Ofsted visit, inspectors praised our early years provision saying,

‘Children get off to a great start in the Reception class. Leaders have created a calm and purposeful atmosphere where children can thrive as learners. Children enjoy carefully planned, adult-led sessions, as well as independent learning in a wonderfully rich learning environment.’ Ofsted 2022

We have a full programme of initial visits, meetings and events before your child starts school to ensure that this transition is as smooth and successful for both children and parents. A letter will be sent to new parents outlining our transition programme and start dates.



Residential visits

At Gilthill we believe that residential visits are an important way to teach independence, teamwork, resilience and to prepare our children for the next stage of their education. We have designed our residential offer so it builds in length as the children move through school.

This starts in Year 2 with a one-night camp or stay-and-play opportunity in school. In Year 4, this extends to a one-night residential stay in a local adventure camp which is designed to provide a variety of outdoor activities. Finally, in Year 6 we have a week-long residential stay where the children get to develop their independence and resilience as well as enjoying time together with their friends.



School Clubs

We believe in the power of extracurricular activities to enrich the lives of our pupils. They provide all pupils with the opportunity to experiment with new skills and train existing ones. They are encouraged to build relationships and work as part of a team where communication and support are paramount.

During a school year we run a variety of sports clubs run by our school sports coach. These include football, athletics and dance.

As part of our curriculum offer, we also provide Samba Drumming sessions, Music Tech and Drumba sessions.

Staff also run various after school clubs throughout the year. These include dance clubs, gardening, art and craft clubs and choir.

We also have a number of outside companies who run afterschool clubs in our school building. These include Bricks for Kids, Clay Creators and Magical Maths. Places for these can be booked and paid for via their websites. Links will be sent out to parents when the clubs are running.



Communicating with parents

We believe good communication with parents is vital in building the important partnership between home and school. We aim to keep parents fully informed of their child's learning journey as well as information about activities and events. We aim to do this in the following ways:

Dojo – this is a messaging system that allows parents to contact teachers directly and privately. If you have any concerns or queries, this should be your first port of call. Teachers can message privately to parents or post whole class messages about PE days and events in school. Teachers check Dojo frequently and respond to messages as soon as they can. We are also able to post whole school messages to inform parents of whole school events or news.

Newsletter – this is issued monthly and gives information about what is happening in school, key dates and celebrates success in school.

Text and email – these will come from the school office and may be sent to the whole school or individual year groups/parents. You are also welcome to call or email the office (please see the website for contact information) or you can pop in and see us!

Termly parent overviews are uploaded to the website each term. They give parents information about what their child is learning about that term.

Parent consultation meetings – we have 3 parents consultations meetings per year, one per term. We offer face to face appointments giving you the chance to look through your child's work, celebrate success and talk to the teacher about any concerns you have. Remember, you don't have to wait until parents evening to do this. Please contact us via Dojo, email or phone if you would like to make an appointment to chat to one of the team.

End of year report – this is a written report outlining your child's achievements and progress over the year.



Absence

We do require a reason for absence on the first day your child is off school. Please contact the school office and inform us of the reason for the absence as early as possible, preferable before 8.50am. If we do not hear from you, we will try and contact you. If no reason is given this will be recorded as an unauthorised absence.

Children who have experienced diarrhoea or sickness should not return to school until all symptoms have been clear for 48 hours. This is to reduce the risk of cross infection.

It is my responsibility to monitor attendance regularly. We have a statutory responsibility to ensure children are at school as much as possible and to inform you if attendance rates start to fall. As well as sending home termly attendance updates, I will also contact parents if attendance becomes a concern. If attendance falls below a satisfactory rate I will write to parents and invite them into school to discuss the matter further. Our aim is to work together to overcome any barriers that may affect your child's attendance. Communication is key!

Leave of absence requests can be made to the head teacher using the form available from the school office. Absences will only be authorised in exceptional circumstance, in line with government guidelines. Family holidays in term time will not be accepted as an exceptional circumstance.

Medicines

The head teacher and other senior members of staff will administer medicines if needed. Our policy states that wherever possible, parents should administer medication therefore, if medication can be taken in the morning, afterschool and evening, we ask parents to do this. If an additional dose is needed in the school day we will administer this. Please ensure you have completed our 'Medicines in School' form and that the medicine clearly carries your child's name and has a measuring spoon if needed. Medicines are stored in a secure fridge in the school office.

We are unable to give Calpol or other non-prescribed medication unless this is prescribed by the doctor. Parents can however pop into school to administer Calpol or other medication at lunchtime if required.

Special Educational Needs and Disabilities

All staff in school are committed to ensuring all children can achieve their full potential. Inclusion is integral to our SEND policy and we ensure equal opportunities for everyone.

Mrs Cregan is our Special Educational Needs and Disability coordinator. She is extremely skilled and experienced in this role and is responsible for coordinating provision for pupils with SEND and liaising with parents, staff and outside agencies.

As an inclusive school we are committed to raising the attainment of all pupils with due regard to their individual circumstances. We are committed to challenging discrimination against those with disabilities, ensuring equality of access and preparing all pupils for life in a diverse society.

Safeguarding

Keeping all of our children safe is our main priority here at Gilthill. We have a robust Safeguarding policy and accompanying procedures that are designed to keep everyone safe and promote the welfare of our pupils, this includes a child protection policy. We may need to work with other agencies and share information if we have a concern about a child's welfare. We will of course work in close partnership with parents wherever possible however this may not always be possible if we feel this will place a child in an increased risk of harm.

Our designated safeguarding leaders are:

Mrs Allison and Mrs Cregan.

If you have any concerns about a child, please come and speak to one of us as early as possible.

School Uniform

We have a school uniform that consists of:

- Emerald green sweatshirt or cardigan (with or without a school logo)
- Grey/black trousers
- Grey/black skirt or pinafore dress
- Yellow polo shirt (with or without a school logo)
- Black Shoes or boots (not trainers)

And for the summer, as well as the above:

- Grey/black/ shorts
- Green and white checked or striped dresses



We also offer a green fleece with an official school logo. We would recommend fleeces are worn as an additional layer when the weather is cooler or as an outdoor layer in the springtime. We would not recommend children replacing their school jumper or cardigan with a fleece as children become too warm in the classroom.

- Children wearing lace up shoes need to practice fastening their shoes independently.
- Jewellery is limited to stud earrings only and these cannot be worn for PE or swimming. (The children must be able to remove and replace their own earrings independently).
- Please speak with the class teacher or Headteacher if you wish your child to wear any specific jewellery.
- Hair should be tied back for school activities, especially on PE and swimming days.
- Hair accessories should be small and in school colours.
- Temporary skin tattoos and nail varnish are not part of school wear.



School Uniform

We expect all our children to wear suitable clothing for PE and outdoor activities.

PE Kit for boys and girls consists of;

- black shorts
- plain white T-shirts
- plimsolls (KS1) or trainers (KS2)
- for outdoor PE during the winter, we like the children to have tracksuit bottoms and a spare sweatshirt. These should be plain black or dark blue with no logos.

Children should, ideally, have their P.E kits in school every day. Please ensure that all uniform is labelled to ensure any lost items can be returned to their owner.

Sweatshirts, cardigans and polo shirts are available from the school office with the school logo. However, alternatives may be purchased from other retail outlets, just as long as they are the school colours of emerald green and yellow.

We also supply book bags containing the school logo and water bottles. These are available from the school office.

Please see the website for uniform order forms.



What children need for the day

- A book bag (Please see individual class messages for bookbag days in EYFS and KS1)
- A water bottle – water only please and not juice or squash. Drinking water regularly throughout the day keeps children hydrated and helps them to learn.
- A P.E. kit. Ideally brought to school on a Monday and taken home on a Friday. Remember to label all items. Children in EYFS and KS1 will bring their PE kits home at the end of every half-term.
- A coat – we go outside to play even if the weather is damp.

School lunchtime arrangements

At Gilthill hot meals are cooked on the premises and the cost currently is £2.40 each for children at Key Stage 2. The weekly menus are available on our website.

Universal Infant Free School Meals: Since September 2014 all infant aged children (Reception, Year 1 and Year 2 classes) have received their midday school meal free of charge. We encourage all infant children to 'try' a school dinner (unless there is a specific dietary need).

Key Stage 2 school meals: The school operate a cashless system for school meal payments for key stage 2 children (Years 3, 4, 5 and 6). The online system, Parent Pay, is where parents/carers can top up their child's account using a secure online account. Parent Pay accounts must be kept in credit to ensure your child can receive a school meal.

Free School meals: Facilities for free school meals are available and all enquiries should be made either to the office or to Nottinghamshire County Council on 0300 500 8080. These enquiries are, of course, treated in strictest confidence. For children entitled to a free school meal the school kitchen can also provide a meal for any educational visits.



LUNCH
TIME

Healthy Packed Lunches

Key Stage 2 children, or Key Stage 1 by prior arrangement, may bring a packed lunch at lunchtime.

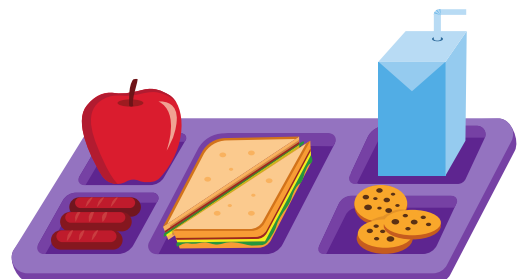
Please ensure that:

- all food and drink are packed in an unbreakable container with a tight-fitting lid, and clearly named
- no glass containers are brought to school
- all food and drink should be consumed at lunchtime only and sweets and fizzy drinks are not allowed
- the lunchbox contains a balanced meal. We suggest, at least one portion of fruit and one portion of vegetables, a starchy food such as bread or pasta and a dairy item such as yoghurt or cheese.

If, for any reason, a child has forgotten his or her packed lunch, we will do everything possible to contact the parents. It may be possible for the child to have a school meal at the appropriate charge. No child will ever go without food.

We have children in school with severe nut allergies. Could we ask that parents do not send nuts or nut products, Nutella (or chocolate spread that contains nuts) into school in packed lunches.

We are a healthy school so ask parents not to send their child with chocolate bars or sweets to eat at lunch or break time. Fruit and vegetables are permitted at break time. Under the Government's National School Fruit Scheme for Key Stage One children each child will be entitled to receive a free piece of fruit every day. The fruit will be fresh and of good quality, equivalent to the fruit that we buy in the shops. The scheme is voluntary and there is no obligation for your child to take part.



Lunchtime Play

At lunchtime we have worked closely with our midday supervisors and Play leader to introduce zones on the playground or field. These are designed to offer a variety of play opportunities at lunchtime to meet the needs of all our children. We have a creative zone filled with den making and creative activities, ball skills zone, keep fit zone, quiet zone and the imagination zone filled with role play and musical instruments. The children love exploring the different zones and we are adding new equipment to the zones all of the time. Our school council are active in keeping us up to date with what our children want to play at lunchtime.



Milk

At Gilthill we provide our own milk scheme. We provide a fresh cup of milk for the children to drink at our morning break. Parents pay for milk termly via ParentPay.



Breakfast and Afterschool Club

We are very fortunate to be able to offer a childcare service before and after school within our school building.

Little Oaks Kids Club provide our before and after-school child care. The club is based on site and provides up to 30 places in either club.

Breakfast Club operates from 7:30am to 8:50am (when school starts).

Each child is provided with a wholesome breakfast and a range of activities are undertaken to help your child warm up for the busy school day.

After School Club operates from 3.20pm to 6pm

Children are given a light tea and then a range of activities are provided to burn off excess energy or to chill after a busy day.

For further details, please contact Little Oaks on 0115 9382022

Thank you for taking the time to read a little bit more about our wonderful school. We know you will love it just as much as we do.

If you require any further information, please do not hesitate to contact one of the team.



Parent voice/testimonials

Here are some of the strengths of Gilthill as expressed by our parents in a recent parent survey.

‘Gilthill has a family feel. A friendly reception and approachable headteacher.’

‘Value champions are an excellent addition to Gilthill. These recognise academic qualities but also good interpersonal skills and core values for adulthood.’

‘Thank you for providing a safe and supportive environment for our children. Communication between school and parents is always exceptional.’

‘Both my children are very happy here and seem to do well academically. I like that the school does activities that are fun too and a bit different like Drumba and wheelchair basketball.’

‘Helpful and supportive staff, children all seem happy and eager to get to school every morning. My son is very happy to approach teachers/staff if he has a problem.’

‘The overall environment and culture of the school is fantastic’.
‘Communication is excellent!’



Starting School Checklist

Have you...

- ✓ Complete your emergency contact form
- ✓ Signed to say you give permission for your child to go on local walks and be transported by car if needed
- ✓ Signed the GDPR notice on photographs and media
- ✓ Visited the school website to review our key policies
- ✓ Read our parent code of conduct
- ✓ Placed your uniform order with the office
- ✓ Read the homeschool agreement
- ✓ Checked the school website for term dates and INSET days



CONTACT US



0115 919 0611



office@gilthillprimary.org



www.gilthillprimaryschool.co.uk



Gilthill, Kimberley, Nottingham,
NG16 2GZ

East Midlands
Education Trust

